



**ገጽ 3**  
**ግንባታ ገንባታ ተኮሮ**  
**ገንባታ ገንባታ**

**ገጽ 4**  
**ተወሳኝ መዘገዝ አውቶ አውቶ**

**ገጽ 5**  
**መጠን**  
**መጠን**

**ገጽ 7**  
**ግንባታ ገንባታ ተኮሮ**  
**ገንባታ ገንባታ**

**ገጽ 11**  
**ግንባታ ገንባታ ተኮሮ**  
**ገንባታ ገንባታ**

**ጋሽ-ባርካ - ጉጅለታት ሀገራዊ አብ መደባት ልምዳት ዕዙዝ ተሳትፎ ከምዝነበረን ተገምጊሙ**



ጉጅለታት ሀዘዘን ሲሸለሉ ስራዎቻቸውን ለማጠናቀቅ ሀገራዊ ዘገም ጉጅለታት ሀገራዊ ልምዳት ዕዙዝ ተሳትፎ ከምዝነበረን ተገምጊሙ ወጥቶ ዘገም ጉጅለታት ሀገራዊ ልምዳት ዕዙዝ ተሳትፎ ከምዝነበረን ተገምጊሙ



ዳካሚ ሀገራዊ አብ መደባት ልምዳት ዕዙዝ ተሳትፎ ከምዝነበረን ተገምጊሙ ወጥቶ ዘገም ጉጅለታት ሀገራዊ ልምዳት ዕዙዝ ተሳትፎ ከምዝነበረን ተገምጊሙ ወጥቶ ዘገም ጉጅለታት ሀገራዊ ልምዳት ዕዙዝ ተሳትፎ ከምዝነበረን ተገምጊሙ

**አብ ገንባታ ዘገም ጉጅለታት ሀገራዊ ልምዳት ዕዙዝ ተሳትፎ ከምዝነበረን ተገምጊሙ**

**ናቕፋ - ሓረጎቶች አግራፊ ርቡዕ እቶች ክሓፍሱ ትጽቢቶም ይገልጹ**

**ኮራንቫ - ኤርትራውያን፣ ሃገራዊ ዕምሳኤም ንምዕዛዝ ይሰርሑ**

ኮራንቫ ስርዓታት ለማክበር ከምዝነበረን ተገምጊሙ ወጥቶ ዘገም ጉጅለታት ሀገራዊ ልምዳት ዕዙዝ ተሳትፎ ከምዝነበረን ተገምጊሙ



ዕምሳኤ ከምዝነበረን ተገምጊሙ ወጥቶ ዘገም ጉጅለታት ሀገራዊ ልምዳት ዕዙዝ ተሳትፎ ከምዝነበረን ተገምጊሙ



ዕምሳኤ ከምዝነበረን ተገምጊሙ ወጥቶ ዘገም ጉጅለታት ሀገራዊ ልምዳት ዕዙዝ ተሳትፎ ከምዝነበረን ተገምጊሙ







# ፍረ ዳዕሪ

ሕርሻን መግብን

ዓንደመስቀል በርሀ

## ተወሳኝ መግቢ አውደአመት

### ብቁጽሊ ቀስጣ ዝተጠቐለለ ጥሑን ስጋ

- ዓቕን**
- 1/2 ኪሎ ቁጽሊ ቀስጣ
  - 1/4 ኪሎ ጥሑን ስጋ
  - 1 ኩባያ ብደቂቅ ዝተመትረ ቀይሕ ሸጉርቲ
  - 1/4 ኩባያ ዘይቲ
  - 2 እንቋቅሖ ዝተወቐዐ
  - 2 ዝበለለ እንቋቅሖ
  - 1 ማንካ ጣውላ ዝደኸመ ሸጉርቲ ጸዕዳ
  - ማንካ ሻሂ ጸሊም በርበሪ
  - 2 ማንካ ሻሂ ጨው
  - 1 ማንካ ጣውላ ብደቂቅ ዝተመትረ ፐርሰሚሎ
  - ዘይቲ (ንመቐለዊ ዝኸውን)
  - 2 ኮመደሪ (ንመመላኽዒ ዝኸውን ብኸቢብ ዝተመትረ)



መወከሲ- መጽሓፍ ክሸነፍ (ብዘምዘም ዓ/ሰላምን ራሕማ ዓ/ሰላምን)

**አገባብ አደላልዎ**

ቁጽሊ ቀስጣ ሓጺብና ክሳብ ክተዓጸጸልልና ዝኸኸል ቁሩብ ነገራኽፍኹ፣ ቀጺልና ነቲ ቀይሕ ሸጉርቲ ብዘይቲ ንቐልዎ፣ ከይቀይሖ እንክሎ ከኣ ነቲ ስጋ ነኡትዎ፣ ቁሩብ ጸኒሕና ፐርሰሚሎ፣ ሸጉርቲ ጸዕዳ፣ ጸሊም በርበሪን ጨውን ኣኣቲና ኣወሃሂድና ነውርዶ። ብድሕርቲ ብማንካ እናዓቀንና፣ ቡቲ ዘንፈኽፈኽናዮ ቁጽሊ ቀስጣ ጠቐሊልና፣ ኣብ ዝተወቐዐ እንቋቅሖ እናኣለኽና፣ ኣብ ዝረሰነ ዘይቲ ንቐልዎ፣ ኣብ ዘይቲ ዘሰቲ ወረቐት ድማ ነውጽኡ። ኣብ መወዳእታ ኣብ ጸፊሕ ብይቲ ሰሪዕና፣ ቡቲ እንቋቅሖን ኮመደሪን ኣመልኪዕና ንቐርቦ።

### መረቕ አሕምልቲ

- ዓቕን**
- 1/2 ኪሎ ካውሎ ፍዮሪ
  - 2 ሸጉርቲ ቐይሕ
  - 3 ድንሽ
  - 1 ኩባያ ጥሑን ኮመደሪ
  - 2 ካሮቲ
  - 1/4 ኪሎ ፐፐርኒ ብደቂቅ ዝተመትረ
  - 1/2 ሊትር ማይ
  - 1 ማንካ ሻሂ በርበሪ ጸሊም
  - 1/2 ኩባያ ዘይቲ
  - 1 ማንካ ጣውላ ዝደኸመ ፐርሰሚሎ
  - 1 ማንካ ጣውላ ዝደኸመ ጉንዲ ሰዳኖ
  - ቁሩብ ጨው

**አገባብ አደላልዎ**

ካውሎ ፍዮሪ ካብ ጉንዲ ፊሊና ሓጺብና ንቐርቦ፣ ድንሹን ካሮቲን ከኣ ቀሪፍና ኣድቂቕና ንመትር። ቀጺልና ካውሎ ፍዮሪ፣ ካሮቲን ፐፐርኒን ሓዋዊሰና ብማይ ነብሰሎ። ምስ በሰሎ፣ ብማንካ ወይ ብመዓኩር ብኬሪ ጌርና ነድክሞ፣ ድሕሪቲ ኣብ ካልእ ድሰቲ፣ ሸጉርቲ ብዘይቲ ንቐልዎ፣ ፐርሰሚሎ፣ ሰዳኖን ኮመደሪን ኣኣቲና ድማ ንቐልዎ፣ ድሕሪቲ ነቲ ዘድክምናዮ ኣሕምልቲ ናብኡ ኣኣቲና ነሕብር፣ ቀጺልና ማይ ኣፍሊሕና ነኡትወል። ኣብ መወዳእታ ኣብሰልና፣ ጨውን በርበሪ ጸሊምን ኣኣቲና ኣወሃሂድና ነውርዶ። ብውዕዩ ኸኣ ንመግቢ ንቐርቦ።

መም. ፍረወይኒ ዝረሂወት



### ኬክ ብርግኦ

- ዘድልዩና ጥሪ ነገራት**
- 1 ኩባያ (250 ሚሊ ሊትር/ሚሊ) ሸጉር
  - 2 ዓብይቲ እንቋቅሖ
  - 1/2 ኩባያ (125 ሚሊ) ርግኦ
  - 1/2 ኩባያ (125 ሚሊ) ማይ
  - 1/2 ኩባያ (125 ሚሊ) ዘይቲ ኣውሊዕ/ሱፍ
  - 2 ኩባያ (500 ሚሊ) ሓርጭ ፊና
  - 3 ማንካ ሻሂ (15 ሚሊ) ቤኪን ፓውደር



**አገባብ አደላልዎ**

- ኣቐዲምና ንእቶንና/ ፎርናና 180 ዲግሪ ሰንቲግራድ ነመቕ
- ኣብ ዕመቕ ዝበለ መትሓዘ እንቋቅሖን ሸጉርን ሓዋዊሰና ንዓሰርተ ደቓይቕ ንወቐዎ፣ ብድሕርቲ ፊና ምስኡ ሓዋሰና ንሓሰዮ
- ቀጺልና ርግኦ፣ ማይን ዘይቲን ምስኡ ሓዋሰና ንሓሰዮ
- ዘይቲ ዝተለኸየ ባዳላ ወይ ኬክ መሰርሖ ኣዳሊና ኣብኡ ንግልብሎ
- ን 50 ደቓይቕ ክበሰል ኣብ እቶን ንሓድጎ፣ ምስ በሰለ ንመግቢ ድሉው ይኸውን
- ንመለበጢ ወይ መደፍደፊ ዝኸውን ክሬም ንምድላው ድማ፣ ሓደ ማንካ ጣውላ ጠሰሚ ነምክኹ። ሓደ ማንካ ጣውላ ሸጉር ኣብ ልዕሊኡ እናኸሰና ንሕውሰሎ። እንደገና 3 ማንካ ጣውላ ሓርጭ ሸጉር ብምውሳኽ፣ ክሳብ ሕፍሰ ወይ ሎጎግ ዝበል ዓቕን ማይ እናወሰኸና ነፍልሖ። ምስ ተዳለወ ኣብቲ ዘዳለናዮ ኬክ ብልዕሊኡ ነፍሶ።

ብ Ursula Ameen

### ምቁር ፖርታቸፐር (Sweet Flapjacks)

- ዘድልዩና ጥሪ ነገራት**
- 2 ኩባያ ሓርጭ ፊና
  - 4 ማንካ ጣውላ
  - ሓደ ዓብይ እንቋቅሖ
  - 3 ማንካ ጣውላ ዘይቲ ሱፍ/ ኣውሊዕ
  - 4 ማንካ ጣውላ ጸባ
  - 2 ማንካ ሻሂ ቤኪን ፓውደር
- ማይ ክሳብ ብሑቕና ብማንካ ክለዓል ዝኸኸል ሕፍሶት ዝህልዎ ዝኣኸለና ንዋቀም

**አገባብ አደላልዎ**

መጀመርታ፣ ኩሉ ዘዳለናዮ ጥሪ ነገራት ኣብ ዓሚቕ መትሓዘ ንገብር። ብማንካ ጌርና 80 ሚሊታዊት ሕፍሶት ክሳብ ዝህልዎ ንሓዋውሶ። ብሑቕና ብማንካ ዝለዓል ሓፊስ ክኸውን ይግባእ። ቀጺልና ባዳላና ኣብ ማእከላይ ሓዊ ሓደ ማንካ ጣውላ ዘይቲ ብምግባር ንሰኽትቶ።



ብ Ursula Ameen

### መረቕ ስጋ ኩባዳ

- ዓቕን**
- 1/4 ኪሎ ስጋ ኩባዳ ናይ ብዕራይ
  - 2 ማንካ ጣውላ ዝደኸመ ፐርሰሚሎ
  - ሓደን ፈረቓን መረቕ ደርሆ/ ዳዶ
  - 1/2 ኩባያ ማርጋሪን
  - 1/2 ኪሎ ዝደኸመ ጉንዲ ሰዳኖ
  - 1 ማንካ ሻሂ በርበሪ ጸሊም
  - 1 ማንካ ጣውላ ዝደኸመ ሸጉርቲ ጸዕዳ
  - 1 ማንካ ጣውላ ሓርጭ
- አገባብ አደላልዎ**
- ስጋ ኩባዳ ኣድቂቕና ንመትር፣ ቀጺልና ኣብ ድሰቲ ብምግምግል፣ ሰዳኖ፣ ፐርሰሚሎ፣ ሸጉርቲ ጸዕዳን ፍርቂ ካብ ዘዳለናዮ ማርገሪንን ኣኣቲና ቁሩብ ንቐልዎ። ጨውን መረቕ ደርሆን ኣኣቲና ኸኣ ንክበሰል ንሓድጎ። ቀጺልና ኣብ ካልእ ድሰቲ፣ ነቲ ዝተረፈ ማርገሪን ብምምክኽ፣ ሓርጭ ኣኣቲና ቐይሕ ክሳብ ዝበል ንቐልዎ፣ ጸባ ጌርና ኸኣ ነብሰሎ። ብድሕርቲ ምስቲ ዝበሰል ዘሎ፣ እቲ ኣድቂቕና ዝመተርናዮ ኩባዳ ሓዋሰና እናኣሕበርና፣ ብሓንጻእ ኣብሰልና ነውርዶ። ብውዕዩ ኸኣ ንመግቢ ንቐርቦ።









ሓበን ተስፋ-ሚካኤል

አዘርኦቲክ ፍራንቲየር ከባድ ስራዎች ለመስጠት ጥረት ስላድርገውት ለፋይናንስ ማህበራት ለመሰጠት ሞክረዋል። ለአዘርኦቲክ ፍራንቲየር ማህበራት ለመሰጠት ሞክረዋል። ለአዘርኦቲክ ፍራንቲየር ማህበራት ለመሰጠት ሞክረዋል።

### ‘ኤሌክትሪክ ዘመናዊ ልማት’ ዕቅድ አዘርኦቲክ የዓለም!



አገሪቱ የኤሌትሮኒክ ፎቶኒክስ ስራ ላይ ተቀምጣለች። ይህ ስራ የኤሌትሮኒክ ፎቶኒክስ ስራ ላይ ተቀምጣለች። ይህ ስራ የኤሌትሮኒክ ፎቶኒክስ ስራ ላይ ተቀምጣለች።

ወይ ይህን ዓይነት ስራ ላይ ተቀምጣለች። ይህ ስራ የኤሌትሮኒክ ፎቶኒክስ ስራ ላይ ተቀምጣለች። ይህ ስራ የኤሌትሮኒክ ፎቶኒክስ ስራ ላይ ተቀምጣለች።

ሌሎች ስራዎች ላይ ተቀምጣለች። ይህ ስራ የኤሌትሮኒክ ፎቶኒክስ ስራ ላይ ተቀምጣለች። ይህ ስራ የኤሌትሮኒክ ፎቶኒክስ ስራ ላይ ተቀምጣለች።

### “አገላጭ ምንቅላትን፣ ተገንዝቦአዊ ክፋል አኒምሮ ዳውን-ሲንድሮም የማዕብል” ተመራመርቷል

አገላጭ ምንቅላትን ማህበራት ለመሰጠት ሞክረዋል። ይህ ስራ የኤሌትሮኒክ ፎቶኒክስ ስራ ላይ ተቀምጣለች። ይህ ስራ የኤሌትሮኒክ ፎቶኒክስ ስራ ላይ ተቀምጣለች።

ገጽ በገጽ ለሚገኝው ስራ ላይ ተቀምጣለች። ይህ ስራ የኤሌትሮኒክ ፎቶኒክስ ስራ ላይ ተቀምጣለች። ይህ ስራ የኤሌትሮኒክ ፎቶኒክስ ስራ ላይ ተቀምጣለች።

በሌሎች ስራዎች ላይ ተቀምጣለች። ይህ ስራ የኤሌትሮኒክ ፎቶኒክስ ስራ ላይ ተቀምጣለች። ይህ ስራ የኤሌትሮኒክ ፎቶኒክስ ስራ ላይ ተቀምጣለች።

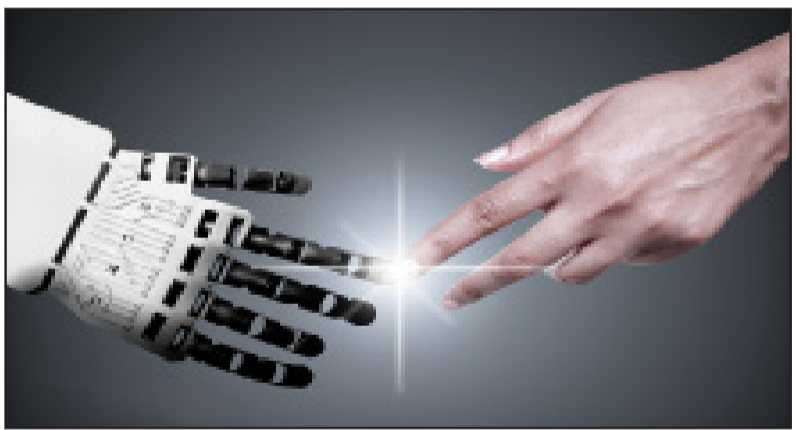


### ሀገራዊ ስምዒት ዘለዎ ‘ሓዲን ቁርባት’ ማዕብሉ

ሀገራዊ ስምዒት ዘለዎ ስራ ላይ ተቀምጣለች። ይህ ስራ የኤሌትሮኒክ ፎቶኒክስ ስራ ላይ ተቀምጣለች። ይህ ስራ የኤሌትሮኒክ ፎቶኒክስ ስራ ላይ ተቀምጣለች።

ገጽ በገጽ ለሚገኝው ስራ ላይ ተቀምጣለች። ይህ ስራ የኤሌትሮኒክ ፎቶኒክስ ስራ ላይ ተቀምጣለች። ይህ ስራ የኤሌትሮኒክ ፎቶኒክስ ስራ ላይ ተቀምጣለች።

በሌሎች ስራዎች ላይ ተቀምጣለች። ይህ ስራ የኤሌትሮኒክ ፎቶኒክስ ስራ ላይ ተቀምጣለች። ይህ ስራ የኤሌትሮኒክ ፎቶኒክስ ስራ ላይ ተቀምጣለች።



### ሰፊውን ጭንቀትን ቀጥታዊ ምትእሶር ተረኩብዎ...

ሰፊውን ጭንቀትን ቀጥታዊ ምትእሶር ተረኩብዎ... ይህ ስራ የኤሌትሮኒክ ፎቶኒክስ ስራ ላይ ተቀምጣለች። ይህ ስራ የኤሌትሮኒክ ፎቶኒክስ ስራ ላይ ተቀምጣለች።

ሌሎች ስራዎች ላይ ተቀምጣለች። ይህ ስራ የኤሌትሮኒክ ፎቶኒክስ ስራ ላይ ተቀምጣለች። ይህ ስራ የኤሌትሮኒክ ፎቶኒክስ ስራ ላይ ተቀምጣለች።

### ሰብ-ሰርሐ ብልሐ፡ አብ ምትእሶር ልማት ልማት የሚሰጠው ጥቅም

ሰብ-ሰርሐ ብልሐ፡ አብ ምትእሶር ልማት ልማት የሚሰጠው ጥቅም... ይህ ስራ የኤሌትሮኒክ ፎቶኒክስ ስራ ላይ ተቀምጣለች።

ገጽ በገጽ ለሚገኝው ስራ ላይ ተቀምጣለች። ይህ ስራ የኤሌትሮኒክ ፎቶኒክስ ስራ ላይ ተቀምጣለች። ይህ ስራ የኤሌትሮኒክ ፎቶኒክስ ስራ ላይ ተቀምጣለች።

በሌሎች ስራዎች ላይ ተቀምጣለች። ይህ ስራ የኤሌትሮኒክ ፎቶኒክስ ስራ ላይ ተቀምጣለች። ይህ ስራ የኤሌትሮኒክ ፎቶኒክስ ስራ ላይ ተቀምጣለች።

How AI Helps in Weather Forecasting

FOR MORE INFORMATION ABOUT US

### የሰፊውን ጭንቀትን ቀጥታዊ ምትእሶር

የሰፊውን ጭንቀትን ቀጥታዊ ምትእሶር... ይህ ስራ የኤሌትሮኒክ ፎቶኒክስ ስራ ላይ ተቀምጣለች።

ሌሎች ስራዎች ላይ ተቀምጣለች። ይህ ስራ የኤሌትሮኒክ ፎቶኒክስ ስራ ላይ ተቀምጣለች። ይህ ስራ የኤሌትሮኒክ ፎቶኒክስ ስራ ላይ ተቀምጣለች።

በሌሎች ስራዎች ላይ ተቀምጣለች። ይህ ስራ የኤሌትሮኒክ ፎቶኒክስ ስራ ላይ ተቀምጣለች። ይህ ስራ የኤሌትሮኒክ ፎቶኒክስ ስራ ላይ ተቀምጣለች።

ሌሎች ስራዎች ላይ ተቀምጣለች። ይህ ስራ የኤሌትሮኒክ ፎቶኒክስ ስራ ላይ ተቀምጣለች። ይህ ስራ የኤሌትሮኒክ ፎቶኒክስ ስራ ላይ ተቀምጣለች።







# ግልጽ ግንኙነት

ናጽነት ደስበለ - ሓብን ገብረአምላክ - ሰምራዊት መለስ



Bisha Mining Share Company  
P.O. Box 4276  
Asmara  
Eritrea

Tel: (+291) 1124941  
Fax: (+291) 1124941  
www.bishamining.com

## VACANCY ANNOUNCEMENT

Bisha Mining Share Company is inviting applicants for the following position for Bisha site project.

**Position: Senior Drill & Blast Trainer**

**Department: Mining**  
**Number required: One (01)**

### Primary Purpose

- To manage and coordinate all day-to-day facets of drilling's safe operator training and blasting within drilling and blasting operation, Effectively support the operational requirements in a safe and cost effectively manner, Knowledge transfer and mentoring is a must in the role to all blast hole operators and Trainers

### Essential Functions

- Ensuring that project outcomes are met through a safe, effective with efficient utilization of resources (human and capital), in accordance with company objectives. Accountable for delivering individual and team production targets, coaching and mentoring the team members for continuous improvement.

### TASK DESCRIPTION EXPANDED TO CORE PERFORMANCE AREAS

#### Safety, Health & Environment

- Actively promoting, coordinating and supervising responsible work practices including maintaining a high standard of housekeeping at all times and providing feedback on Safety, Health and environmental matters.
- Ensure all safety performance measures are achieved, demonstrate visible safety leadership.
- Constantly look to identify hazards and risks through your daily inspections.
- Ensure equipment is used in accordance with its design parameters & correct operating techniques. Housekeeping maintained at a high standard within your area.
- Helping others to work safely through support and good example, not accepting behaviours which could cause harm. Number of safety initiatives raised.
- Identifying and immediately reporting, and controlling where possible, any incident, personal damage (injury), hazard or environmental damage you see at work.
- Ensure you are familiar with and conform to the Environmental Management Plan. Incidents and hazards are reported in accordance with business unit requirements.
- Wearing of the correct PPE and enforcing site procedure.

#### People

- Demonstrate leadership & encourage personal behaviors that will uphold Bisha's Core values. Identify resource & skill gaps for team members. Advise and input to the training plan.
- Supervise personnel work performance to ensure clear, challenging and measurable goals are set and are achieved. Monitor individual performance and provide coaching and feedback on a regular basis or when required.
- Optimize performance by ensuring all understand their position purpose, key accountabilities, performance requirements and that these align with individual skill and capability to produce quality outcomes through applied coaching and feedback.
- Work with Section Superintendent to establish KPI's, Job Performance goals for the Performance of enhancement and Process. Have regular performance tracking discussions, listen to team member's improvement ideas and provide constructive feedback.
- Lead, demonstrate and educate employees to embrace a work environment free from discrimination where everyone is included and treated with respect.

#### Productivity

- Comply with and enforce the content within all Standard Operating Procedures.
- Conduct a training needs analysis to support the development and implementation of programs and content to ensure our teams are trained, developed, and equipped with the capabilities and competencies to operate effectively and compliantly.
- Monitors equipment/consumable usage for optimal and efficient operation.
- Deliver an effective training program to ensure employees attain/retain the required skills & qualifications to perform their roles, take accountability and ownership for the training and compliance of operational employees
- Review and approved Mining's operational training packages in conjunction with the Mine Training Supervisor. Analyse, evaluate and report on training compliance
- Review and analyse ways of working, investigating and articulate shortfalls and highlight future opportunities for continuous improvement . Ensure all relevant

documentation has been signed off. Monitor, identify trends and report on role compliance gaps to improve overall effectiveness and develop and implement gap closure training plans. All reporting requirements are met

### UNIQUE REQUIREMENTS / OTHER INFORMATION

- The incumbent must have strong and extensive blast hole drilling operation specialized in Atlas Copco D55 and D65 as well as CAT MD 6290 and MD 6250.
- The incumbent must have strong analytical skills and exceptional communication skills to deliver training packages. The incumbent must have strong skills in coaching, mentoring and knowledge transfer skill.
- The candidate must be Physically and Medically fit.

Qualifications	Knowledge and Experience
- 15 years operational experience complemented with extensive experience Drill and Blast Training and Assessment qualification, - Diploma or Tertiary qualifications are highly regarded.	- Experience with drill & blast operation with drill rigs operation (Atlas Copco D55, D65, CAT MD6290 & MD6250), Strategic thinking with a result driven attitude, Proven experience coaching and developing with the ability to lead and facilitate small and large groups, Ability to map training packages to recognised competencies.
Technical Skills:	Behavioral Skills:
- High level Computer Literacy, Certificate IV in Training and Assessment or other relevant educational qualifications, Frontline Management	- Live and breathe Bisha Core Values, Outstanding interpersonal and communication skills (Written and verbal), Ability to work under pressure, Ability to work in multi-disciplinary environment, A commitment to safe work practices, Self-motivation and organisation

### General Information and other requirements:

- Place of Work:** Bisha.
- Salary:** As per Company salary scale.
- Type of Contract:** Indefinite

### Additional requirement for Nationals:

- Having fulfilled his/her National Service obligation and provide evidence of release paper from the Ministry of Defense.
- Present clearance paper from current/last employer.
- Testimonial documents to be attached (CV, work experience credentials, a copy of your National Identity Card etc.).
- Only shortlisted applicants will be considered as potential candidates for an interview.
- Application documents will not be returned to sender.
- All applications should be sent through the post office.
- Deadline for application: 10 days from the day of publication in the Newspaper.

**Address: Please mail your applications to:-**  
Bisha Mining Share Company,  
P. O. Box 4276 Asmara, Eritrea

### Note to Eritrean applicants:

Please send a copy of your application to  
Aliens Employment permits  
P. O. Box 7940 Asmara, Eritrea

Please send a copy of your application to  
Mineral resources Management  
P.O. Box 272, Asmara, Eritrea



